

Learning Support Coordinators and Tiwhikete Whakaakoranga Tūturu Full (Category One) Practising Certificates



**Teaching
Council of
Aotearoa
New Zealand**

Matatū. Tū Mataora.
Stand tall. Shape the future.

Our Code Our Standards

Ngā Tikanga Matatika Ngā Paerewa

Teaching Council Matatū Aotearoa,
Ministry of Education and Learning
Support Coordinators (LSC) worked
together

Understand the LSC role in relation to:

- *Our Standards*
- *Ngā Paerewa*

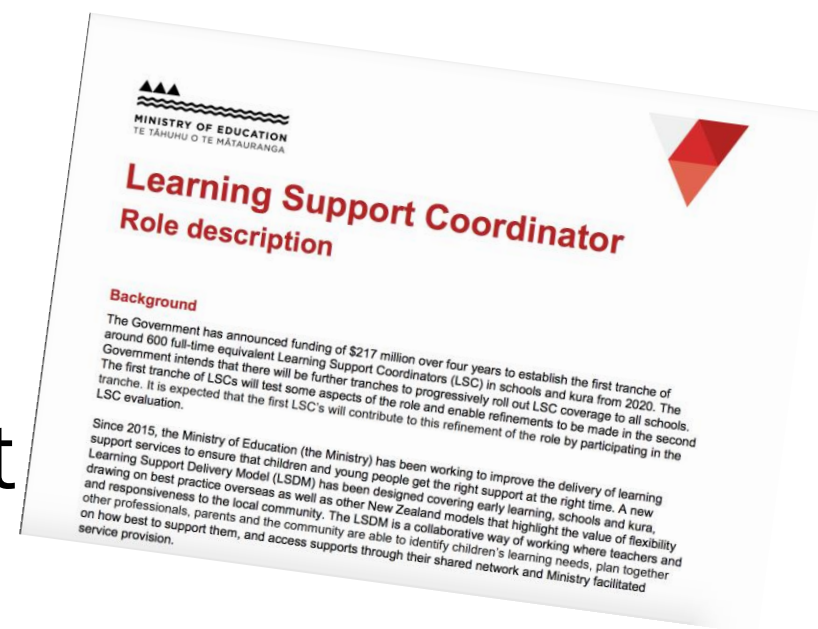


Analysis of Role Description

To hold a Tūturu Full (Category One) Practising Certificate, a teacher must use and meet all of the:

- *Standards* In English medium
- *Paerewa* in Māori medium.

The Council analysed the role description for LSCs finding that it addresses all of the *Standards* or *Paerewa*.



Standards and Paerewa in each context

Standards and Paerewa are expected to be interpreted for each setting to reflect the quality teaching practices that teachers will use in that setting.

Standards and Paerewa can also be interpreted to give clarity for specific roles such as LSC, RTLB....

A quality practice template can be used to record these but is not compulsory.

A significant difference...

For LSC, the learners will often be teacher colleagues rather than children

This has significance for all of the *Standards or Paerewa* and is most obvious when considering how the LSC:

- develops the learning focused culture
- thinks about designing the learning for adults
- and teach.

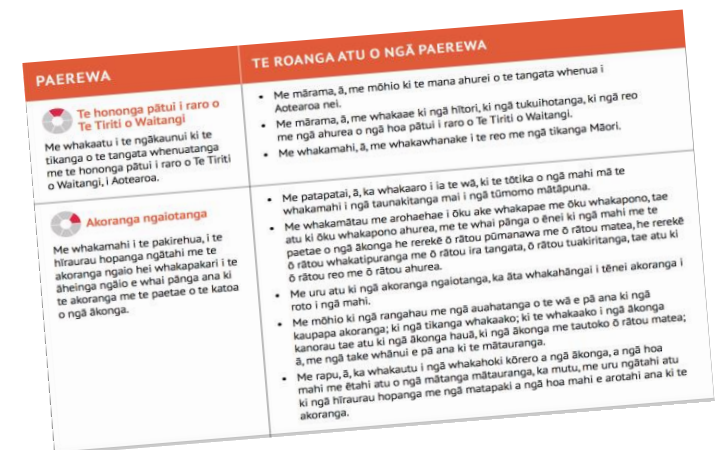
Using the *Standards* and *Paerewa* for LSC in English and Māori medium schools and kura

For English medium, here are the *Standards* their elaborations and LSC contextual interpretation:

<https://teachingcouncil.nz/assets/Files/For-teachers/Learning-support-coordinator-matrix-document.pdf>

For Māori medium, ngā *Paerewa* and their elaborations here:

<https://teachingcouncil.nz/assets/Files/Code-and-Standards/Our-Code-Our-Standards-Nga-Tikanga-Matatika-Nga-Paerewa.pdf>



Employing principals, tumuaki and LSC: planning the professional growth cycle

Steps for the PGC include:

Employing school, kura, principals or tumuaki and their LSC will have common understanding of the *Standards* or *Paerewa* and what meeting them as LSC in their context looks like.

With the principal or tumuaki, LSCs will plan and participate in a cycle of professional growth.

As part of the PGC, the LSC will have the opportunity to learn, grow and discuss their practice and receive feedback.

The employing school, kura, principal or tumuaki will confirm annually whether (or not) the LSC meets the *Standards* or *Paerewa*.

Find further information on TC website

- **LSC resource** <https://teachingcouncil.nz/getting-certificated/for-teachers/working-as-learning-support-coordinators/>
- **PGC webinar** <https://teachingcouncil.nz/professional-practice/professional-growth-cycle/professional-growth-cycle-zoom-webinars/>
- ***Endorser Guideline*** [https://teachingcouncil.nz/professional-practice/professional-growth-cycle/The English medium LSC matrix can be found](https://teachingcouncil.nz/professional-practice/professional-growth-cycle/The%20English%20medium%20LSC%20matrix%20can%20be%20found)
- **Contact us:** letstalk@teachingcouncil.nz

Acknowledgements

Thank you to all the Learning Support Coordinators who:

- participated in the conversations with us to support a way forward for certification,
- tested ideas and thinking with colleagues,
- provided feedback and some examples to indicate how the role reflects the *Standards* and *Paerewa*.

Thank you to the Ministry of Education who facilitated our engagement with the LSC and provided guidance as we advanced the work together.

Matatū. Tū Mataora.
Stand tall. Shape the future.

Visit: Level 7, 80 Boulcott Street Wellington 6011, NZ

Post: PO Box 5326, Wellington 6140, NZ

Phone: +64 (0) 4 471 0852

Email: enquiries@teachingcouncil.nz

